

# Product Specification

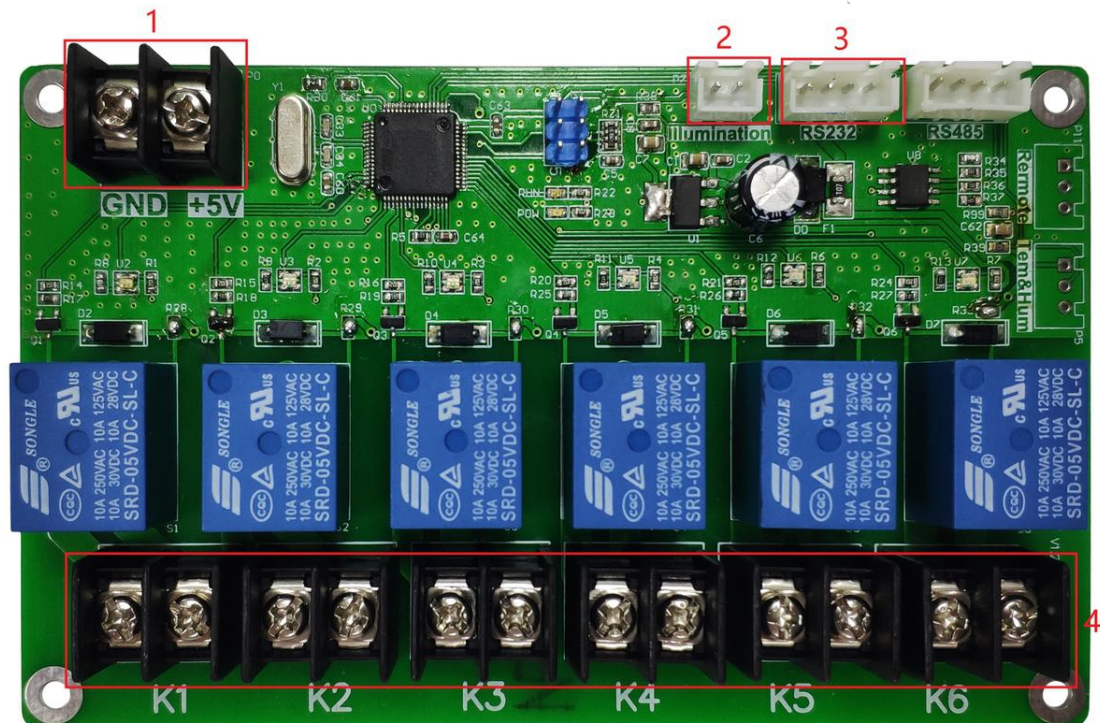
## Full color relay controller K524

V1.0 20180903

## Features

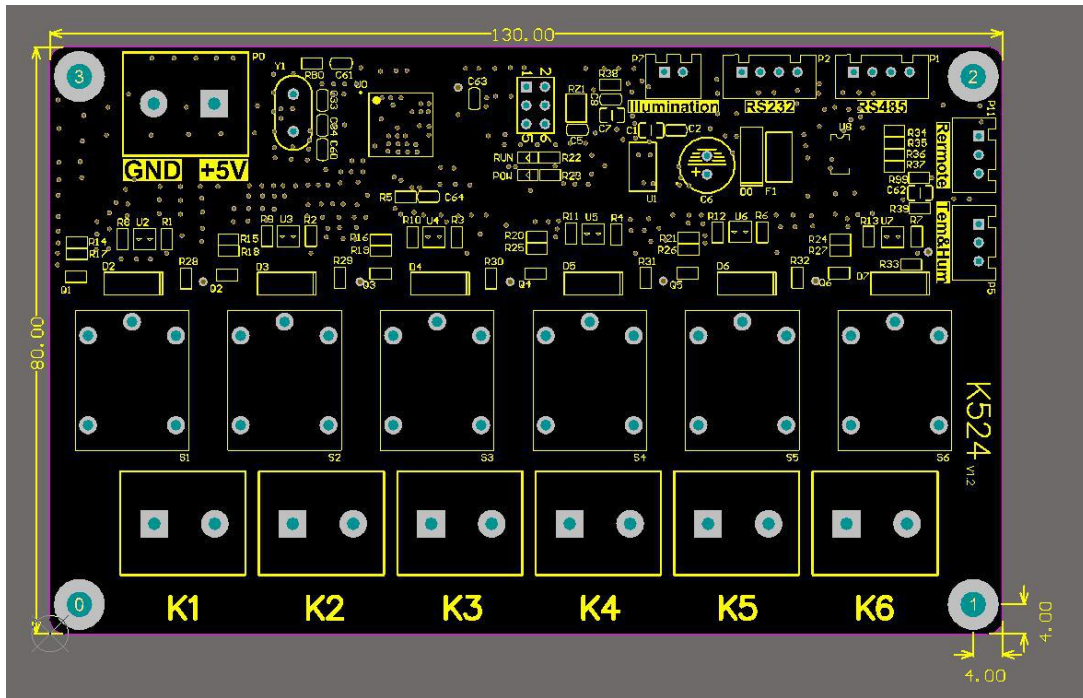
1. Support timing function instead of timer and delay;
2. 1-way photosensitive probe can automatically adjust brightness;
3. Support 6-way power switch control.

## Appearance



1. 5V power supply port;
2. Photosensitive probe port;
3. Sending card / play box connection port;
4. Power switch control port.

## Dimensions



## Specification

	Minimum	Typical	maximum
Rated voltage(V)	4.2	5.0	5.5
storage temperature(°C)	-40	25	105
Working temperature(°C)	-40	25	80
Working humidity(°C)	0.0	30	95

## Attentions

1) To ensure the time storage of the control card during normal operation, please ensure that the battery on the control card is not loose;

2) In order to ensure the long-term stable operation of the system, please ensure that the power supply of the control card and the relay operates power on. Use a standard 5V power supply voltage.

Shenzhen Huidu Technology Co., Ltd